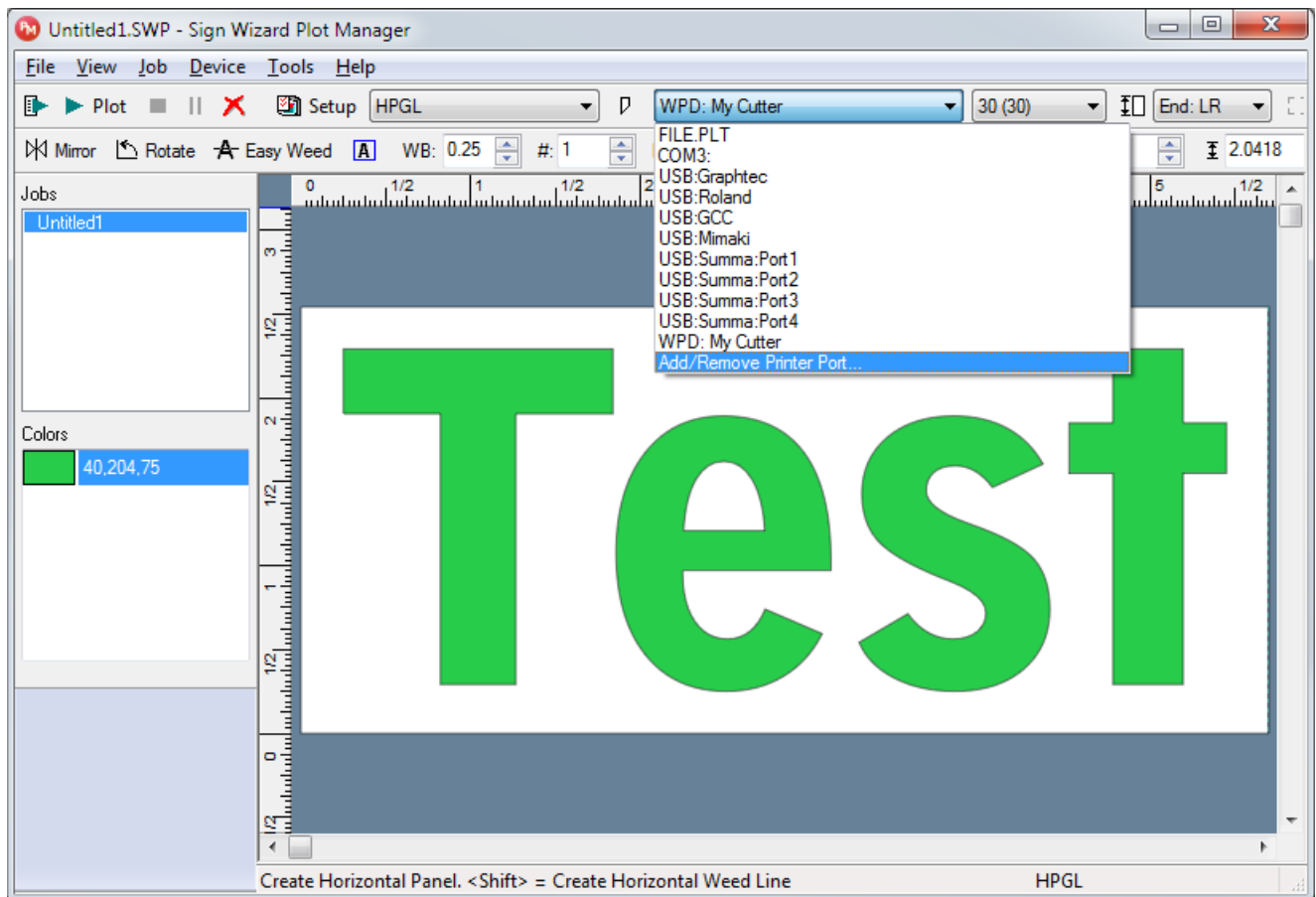


How to Configure WPD Plotting

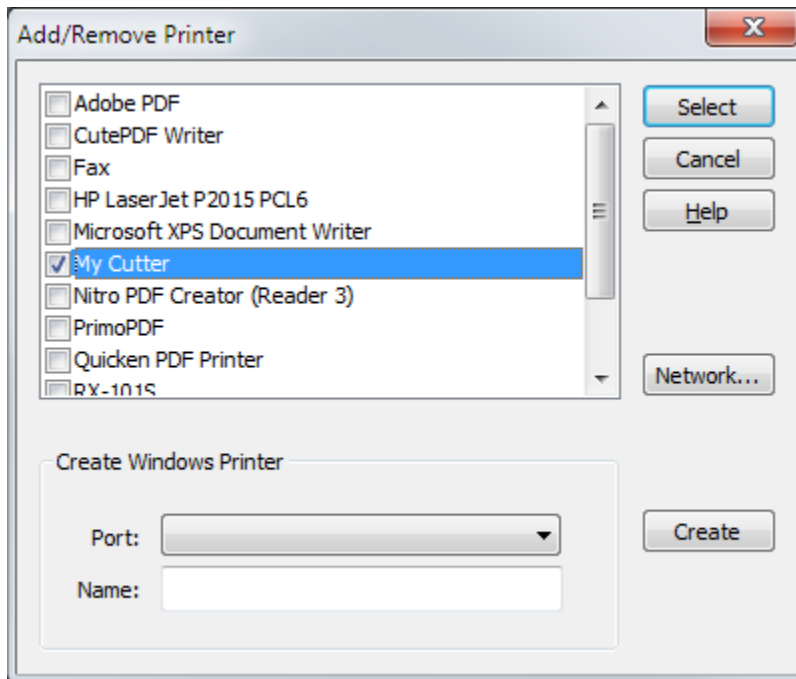
WPD stands for Windows Printer Driver. WPD ports are a way to connect to a cutter using the Windows printer driver subsystem, which can solve certain plotting problems.

Here are the steps you need to take to configure this type of port.

1. Launch **Plot Manager** with the F2 key or **File | Plot**. Depending on your version, you may need to have some object selected first.
2. Select the port drop down list in Plot Manager and select **Add/Remove Printer Port**:

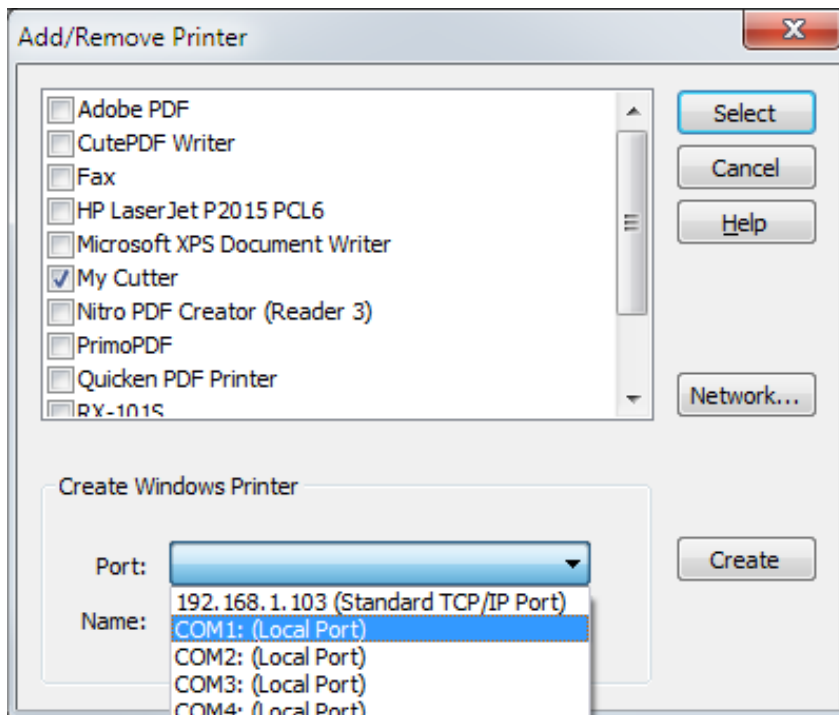


This dialog box will appear:

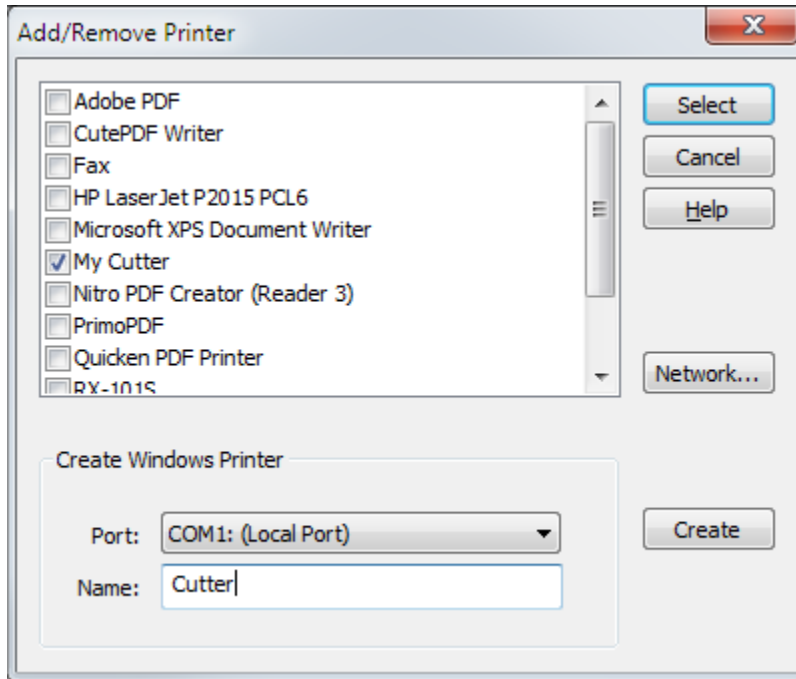


If you've installed a driver from your cutter's manufacturer, it will appear in this window and you can place a checkmark next to it as shown above. In this case you can then press **Select** to continue and this dialog box will close. If you don't see your cutter listed in the printer list, you will need to create one in the **Create Windows Printer** section of the dialog box.

3. To create a new printer, **select the port that your cutter is attached to** from the Port list. In this example, it's COM1, but it could be LPT1, LPT2 or a virtual USB port. Selecting the right port might take some trial and error.

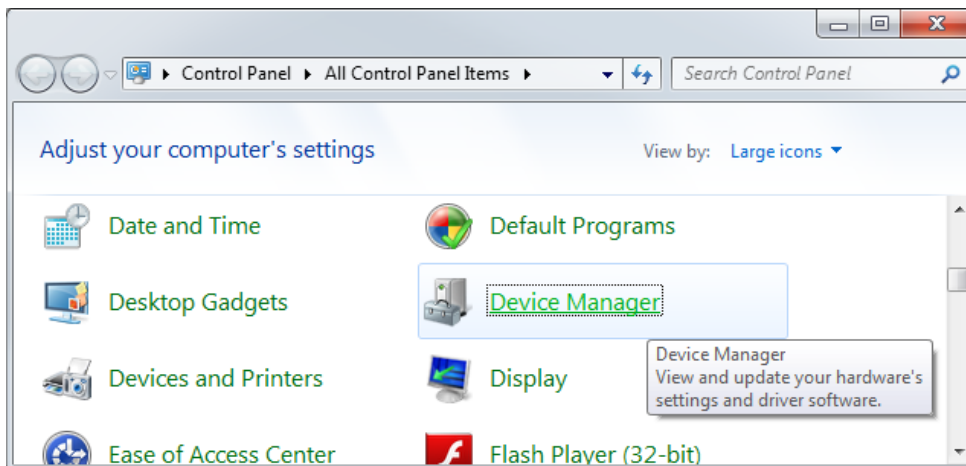


- Next, in the Name box, type in a name for the cutter driver, which can be anything that's not already listed:



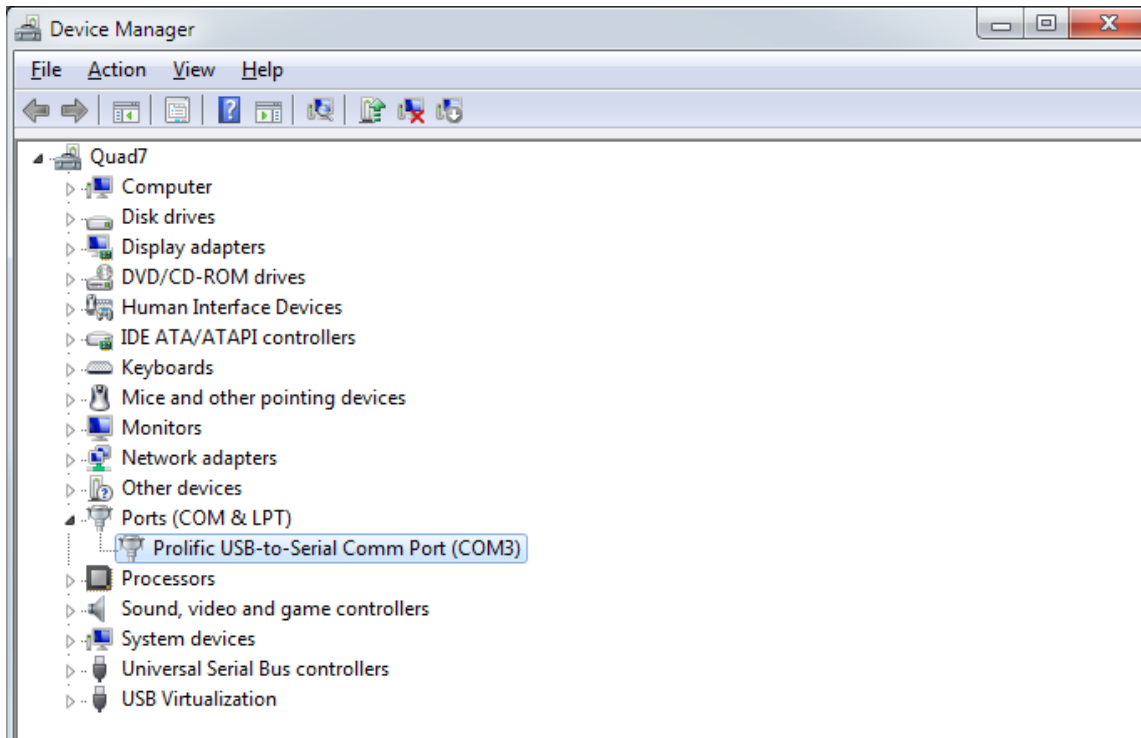
When you press **Create**, after a few seconds a new printer will be added to Windows. Click the checkbox next to the newly create printer from the list and press **Select**.

- The new printer you created will now be used as the port for the current Sign Wizard Plot Manager driver. Plot Manager will use the printer you created to communicate with the cutter.
- If the new WPD port is USB or LPT (parallel), there's nothing else to be done and you can proceed to cutting. If it's a COM (serial) port, you will need to go into **Control Panel** to make sure the configuration matches the cutter's configuration. With USB to serial converters, there will be a COM port listed that you can select.
- Go into the Windows **Control Panel** and click **Device Manager**:

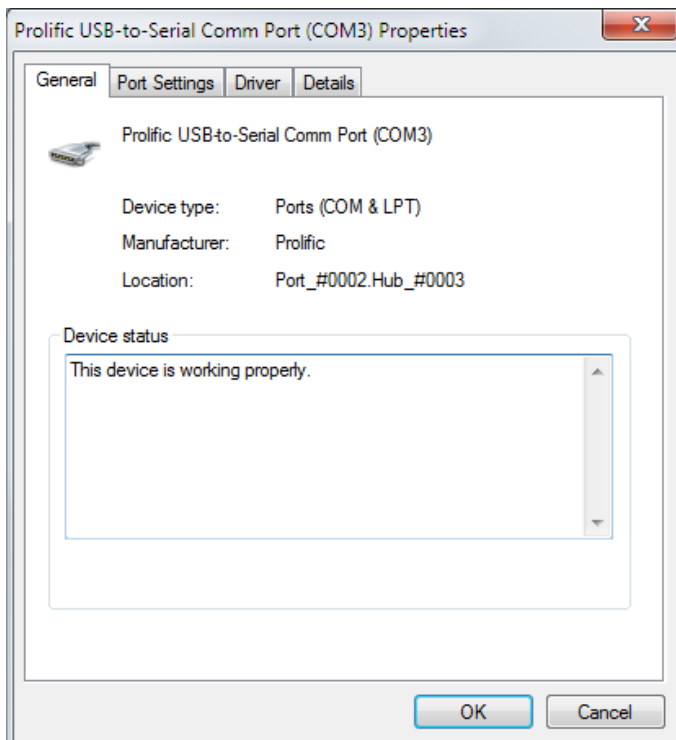


Find the **Ports** section in **Device Manager** and select the COM port to configure. If there is more than one, you

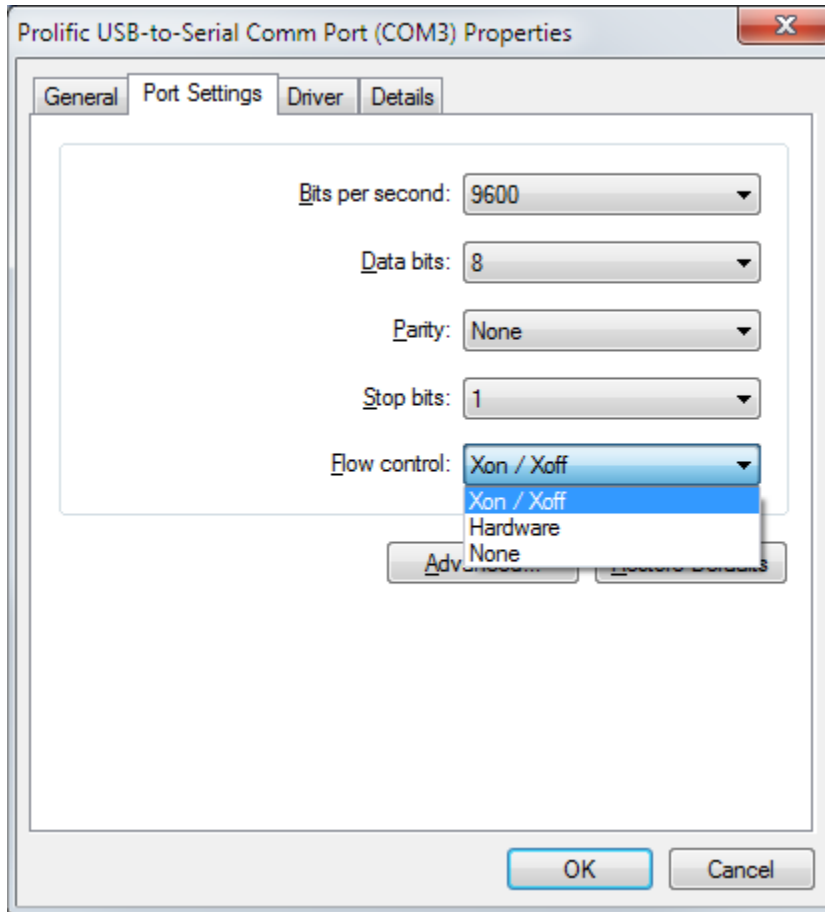
will need to know which COM port the cutter is attached to. Sometimes trial and error is the only way to know that for sure because often port numbers are not labeled. In this example, we're using a USB to serial converter.



8. Double-click on the port to bring up the properties window:

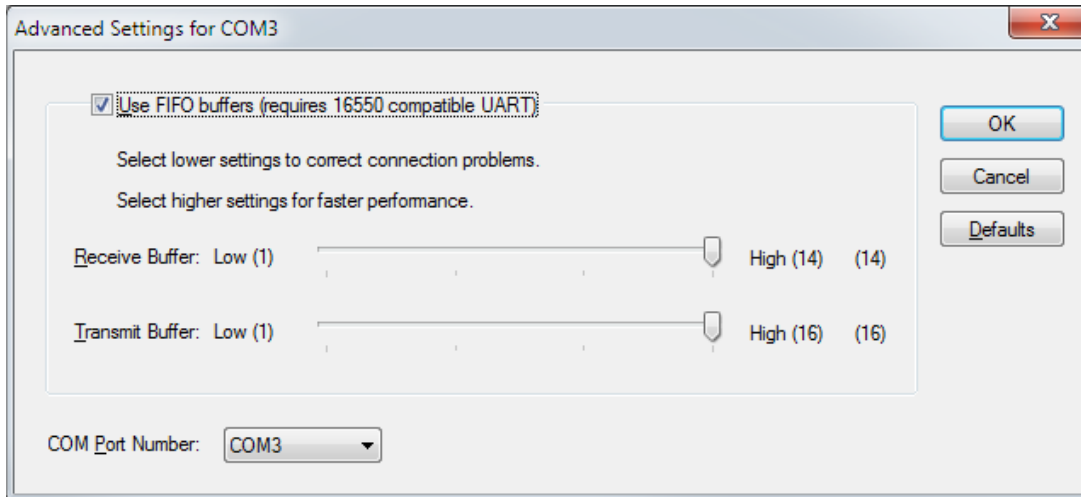


9. Select the **Port Settings** tab:



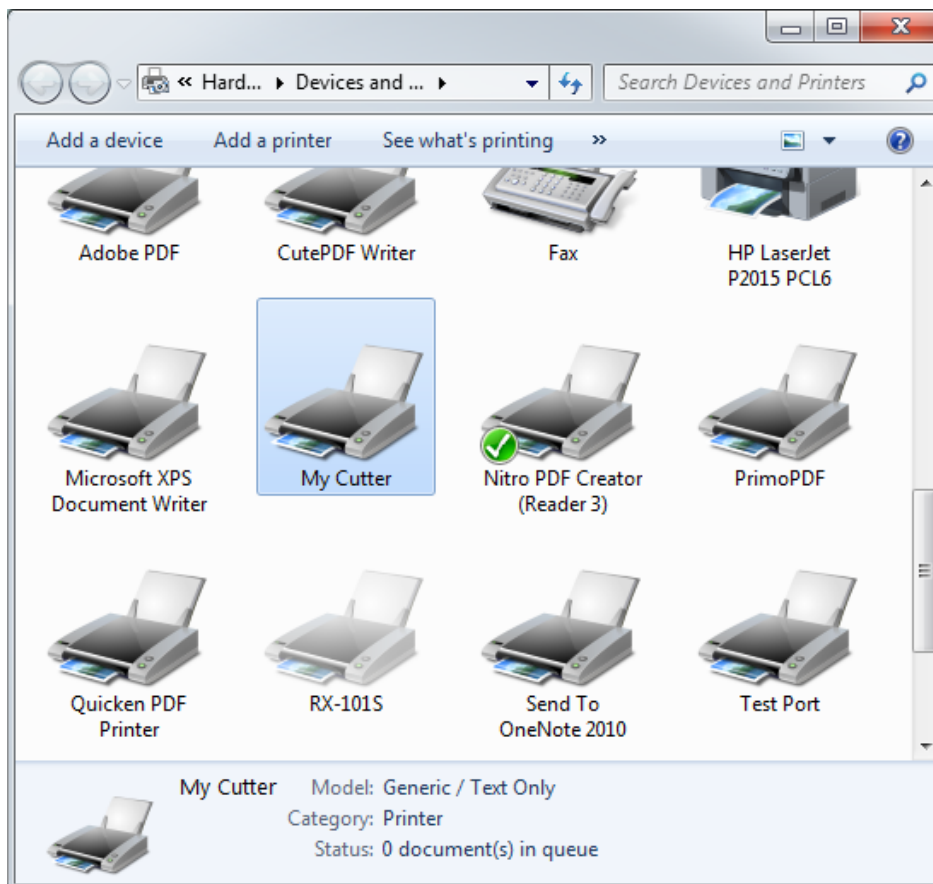
10. At this point, you will need to confirm that these settings are the same as those in the cutter, by either checking the dip switches that control these options or by using the LCD panel control on the cutter. **Every one of the above settings must match what the cutter is using.** If **Flow Control** does not match the cutter's settings, you will almost certainly get random cutting errors. "Hardware" flow control is sometimes called "hardwire". Xon/Xoff is the preferred setting for **Flow Control** in most cases.

11. For some USB to serial adaptors, you have additional options under Advanced:

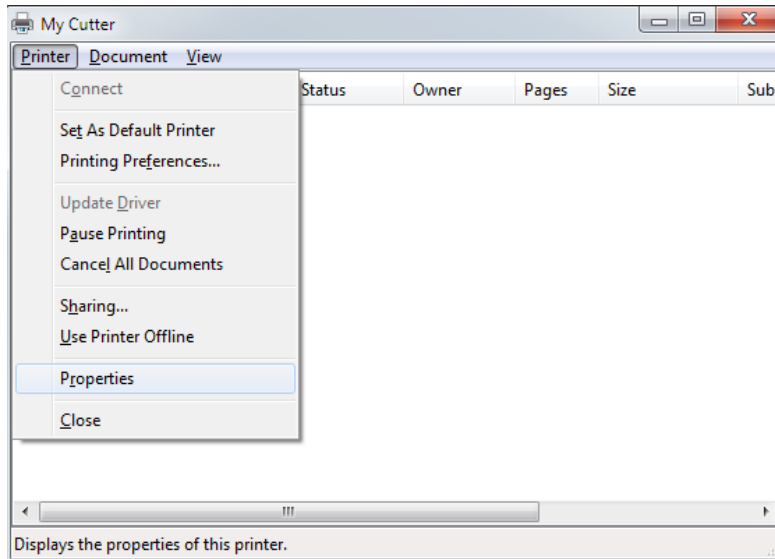


With some USB to serial adaptors, you can select the virtual COM port number to use. If you want to change the COM port that a USB to serial adaptor uses, follow these steps to make sure the printer driver is using the right port:

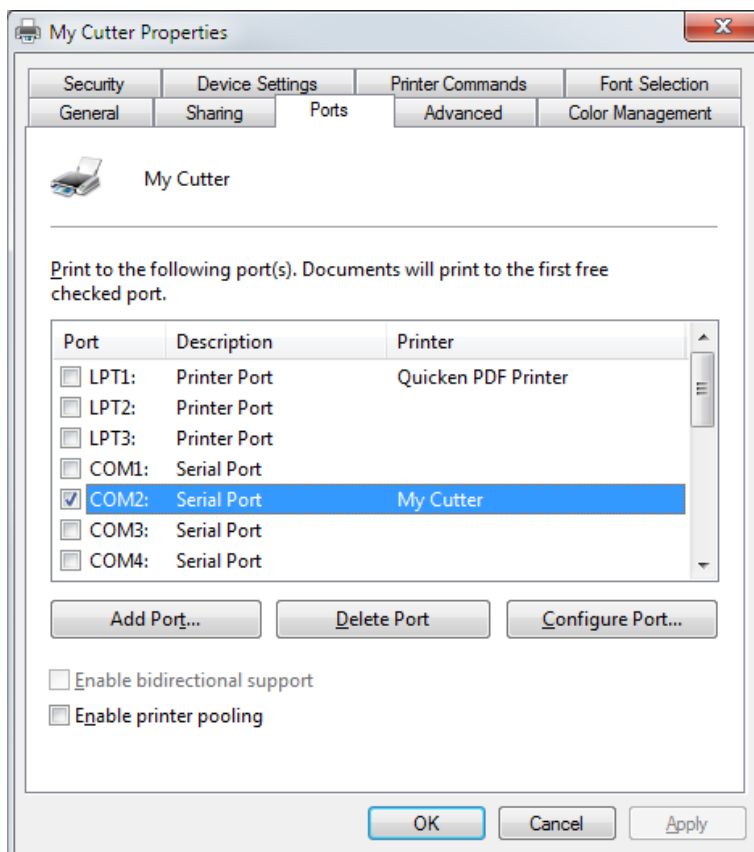
Open the printer by double-clicking on your printer in **Devices and Printers**.



Go to **Printer | Properties:**



Select the **Ports** tab, and then select the port you configured in the adaptor's configuration window:



12. Close all of these windows.

13. You're now ready to do a test plot with these settings.